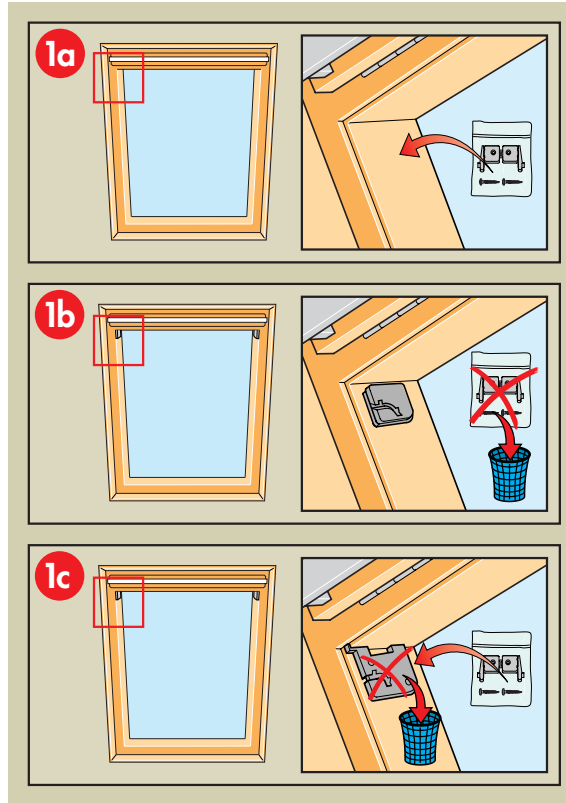
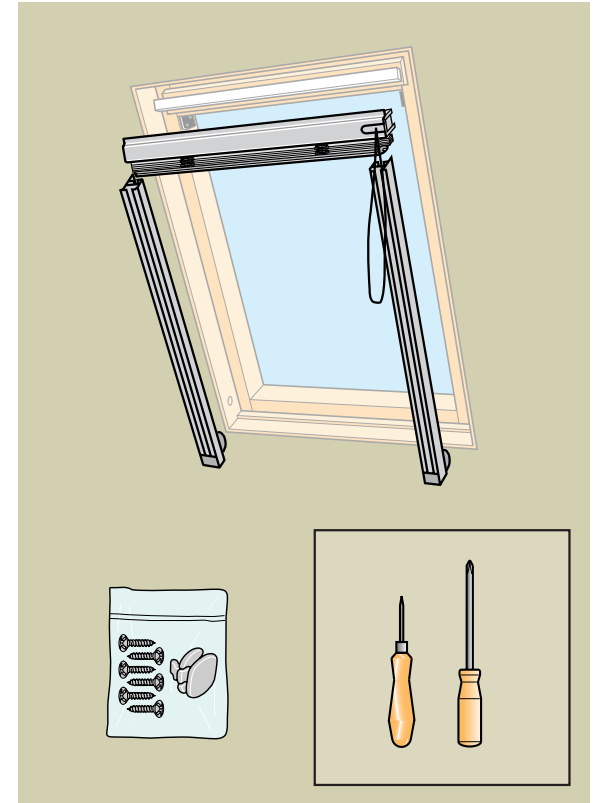


PAL

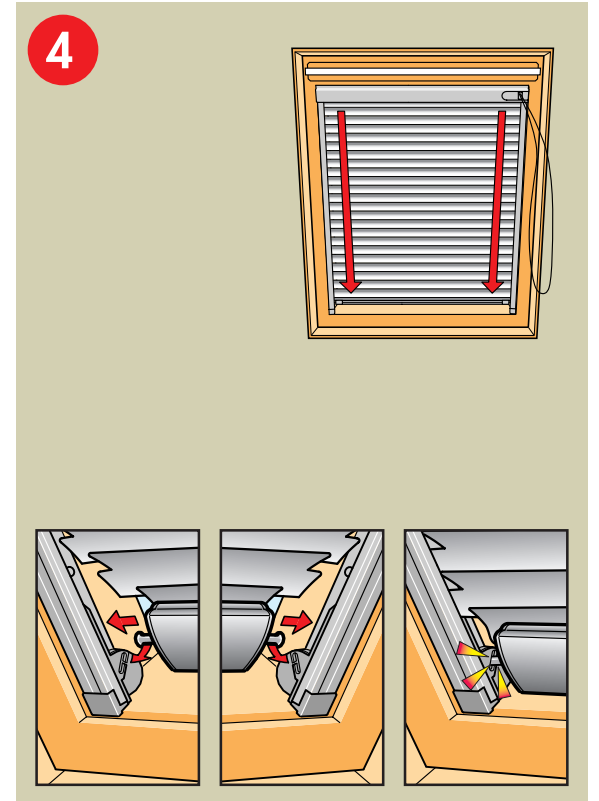
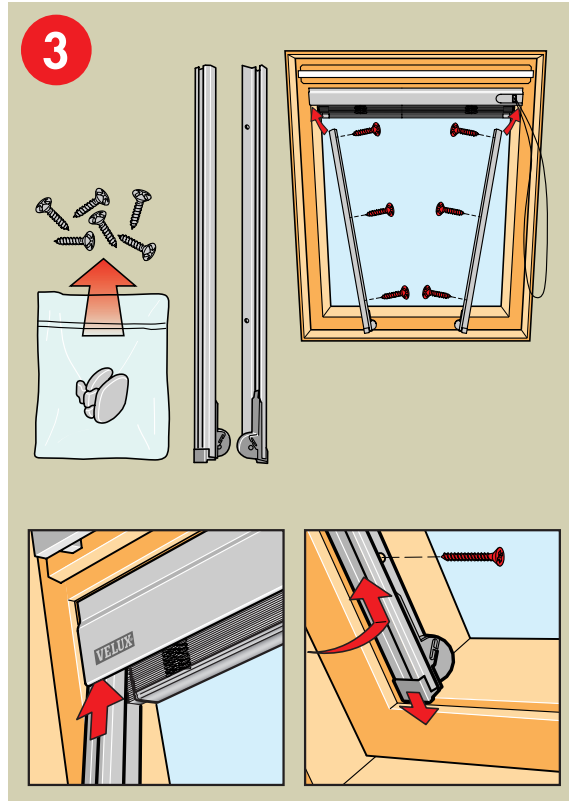
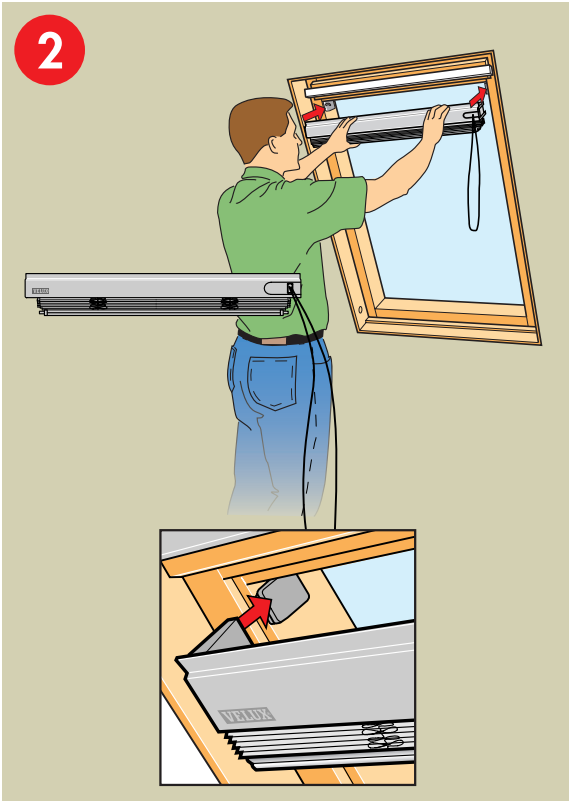
VELUX®

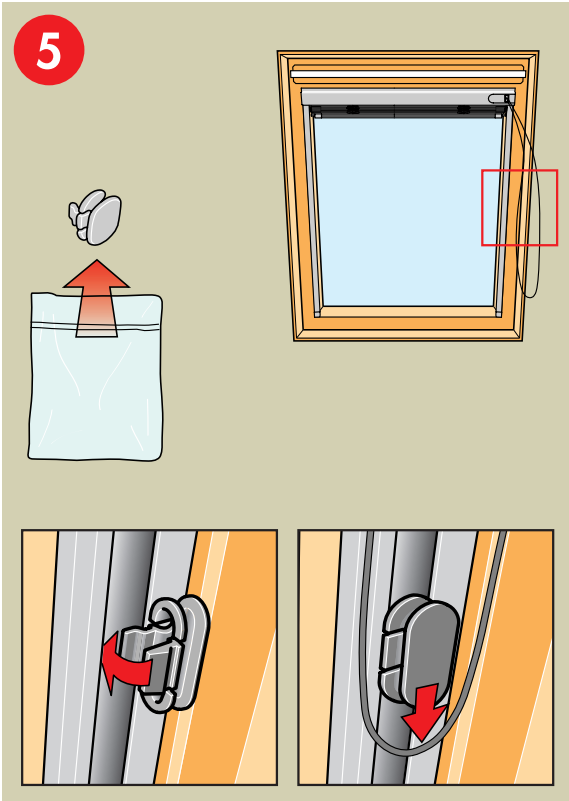


2



3

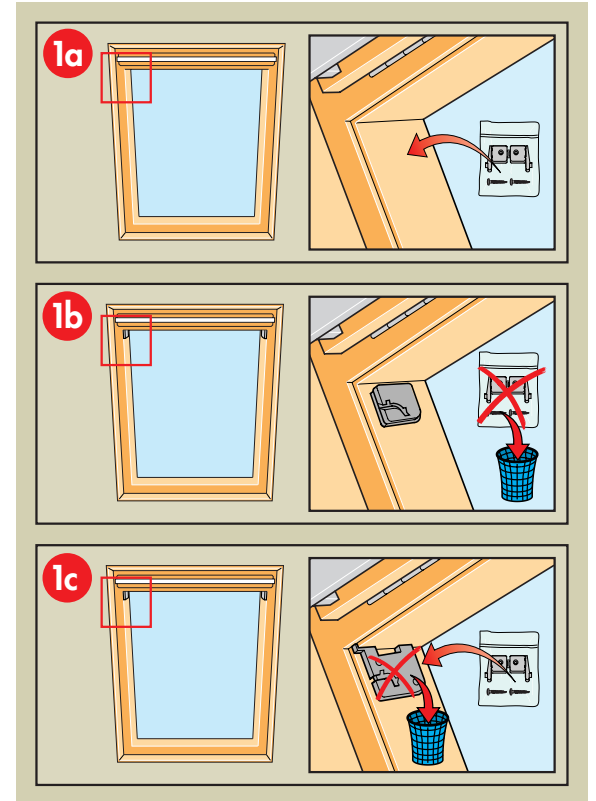




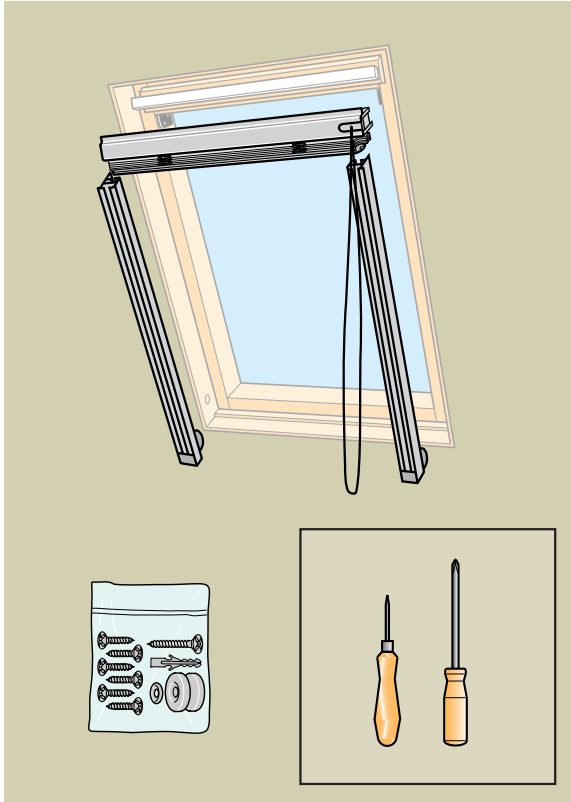
7

PBL

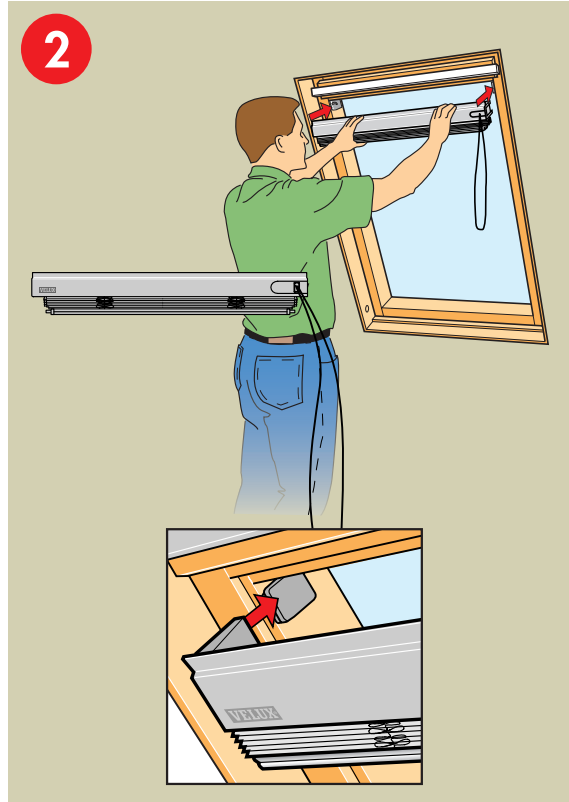
VELUX®



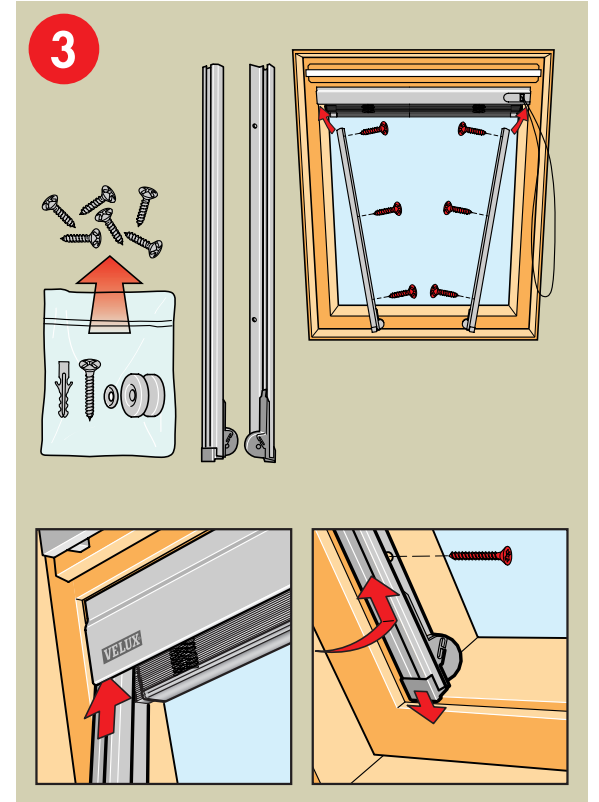
2



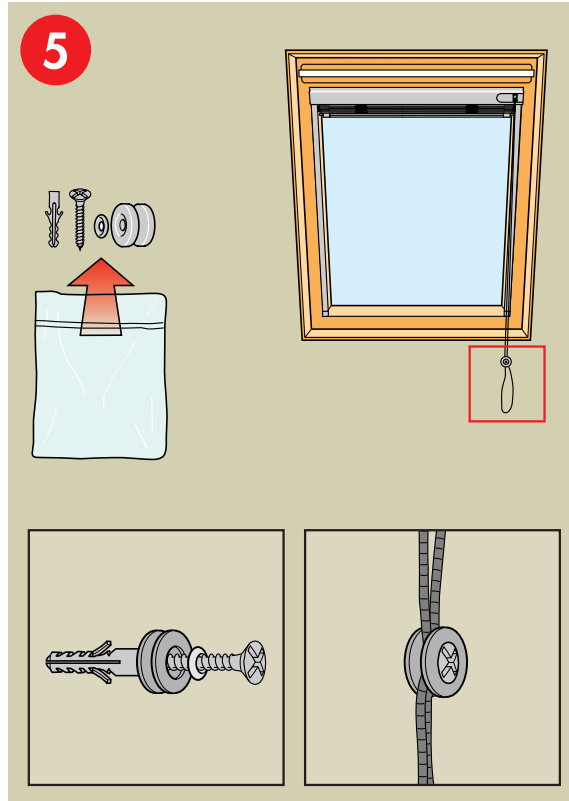
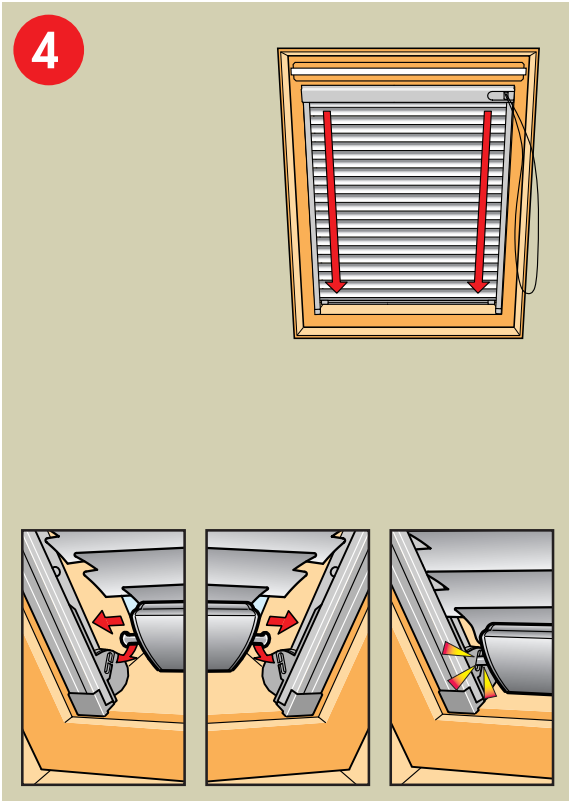
3



4



5



BG: VELUX BULGARIA EOOD
☎ 359 2 955 99 30

BiH: VELUX KROVNI PROZORI d.j.l.
☎ 71 406 434/441

CHN: VELUX (CHINA) CO., Ltd.
☎ 0316-607 27 27

CZ: VELUX ČR, S R.O.
☎ (05) 45 21 42 50

EST: VELUX EESTI OÜ
☎ (2) 601 10 46

H: VELUX MAGYARORSZÁG
☎ (06/1) 436 05 20

HR: VELUX HRVATSKA d.o.o.
☎ 01/622 12 12

IT: UAB VELUX STOGO LANGAI
☎ (8-22) 709101

LV: VELUX JUMTA LOGI SIA
☎ 75 48 993

PL: VELUX-POLSKA SP. Z O.O.
☎ 22 851 43 63

RCH: VELUX CHILE LTDA.
☎ 231.18.24

SK: VELUX SLOVENSKO, S R.O.
☎ (07) 6531 69 77

SLO: VELUX SLOVENIJA d.o.o.
☎ 01 721 68 00

RO: VELUX FERESTRE
DE MANSARDA ROMANIA s.r.l.
☎ 068 42 55 77 / 42 56 00

RUS: VELUX ROSSIA ZAO
☎ (095) 737 75 20

YU: VELUX KROVNI PROZORI d.o.o.
☎ 11 367 0468

www.VELUX.com

PAL/PBL Order no. VAS 450786-0900

© 2000 VELUX Group

® VELUX and VELUX logo are registered trademarks